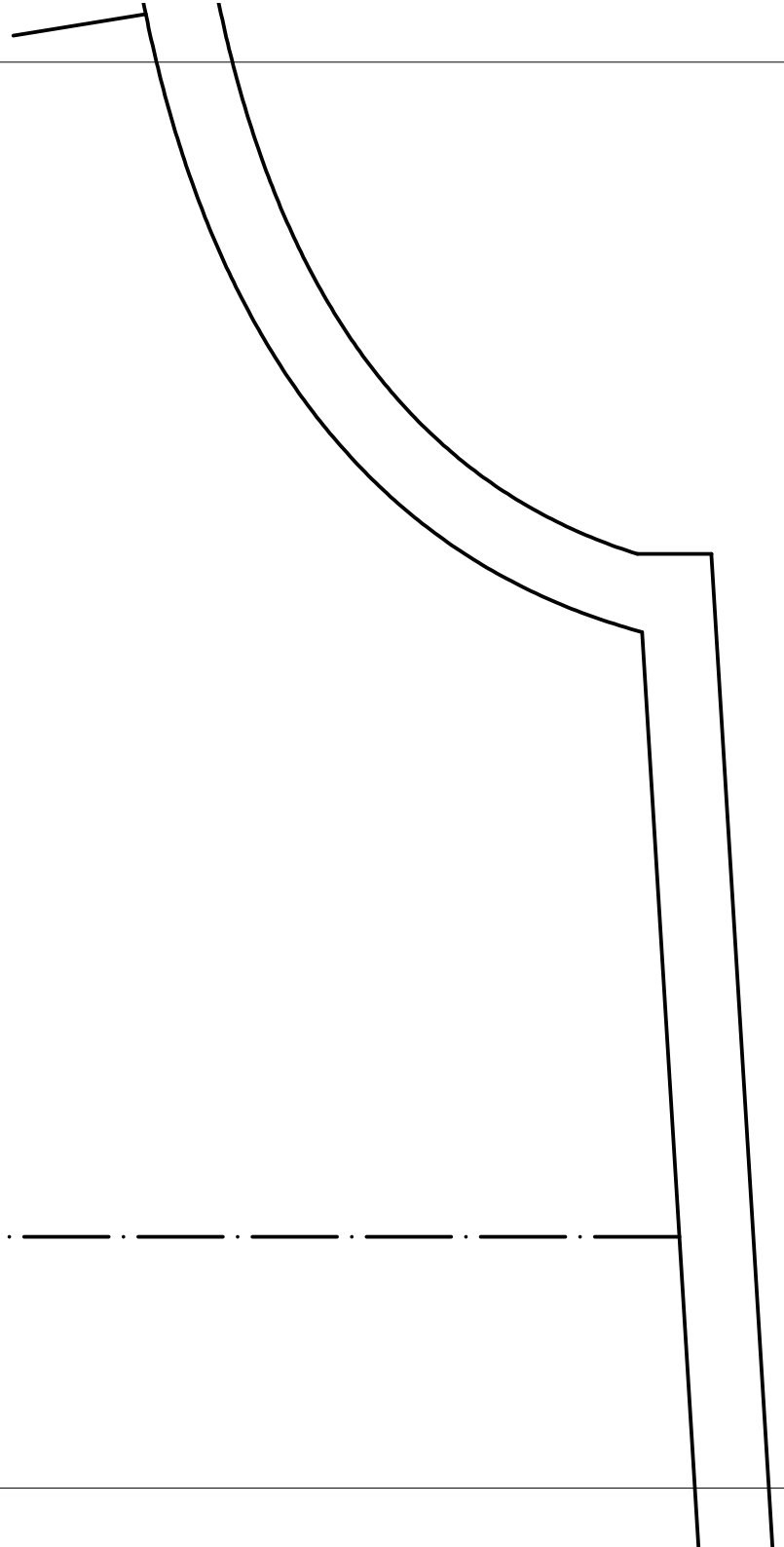


A

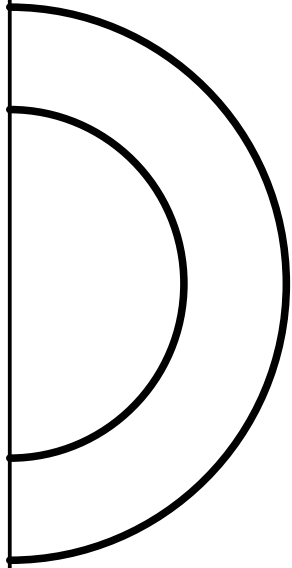
B

後ろ身頃

見返し線

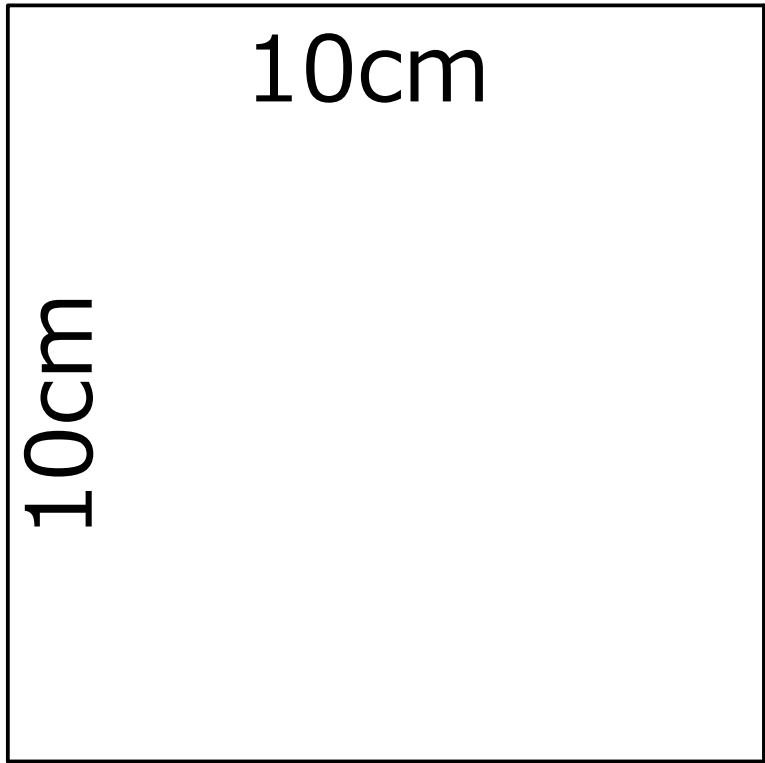


UネックジャンパーSK 11号

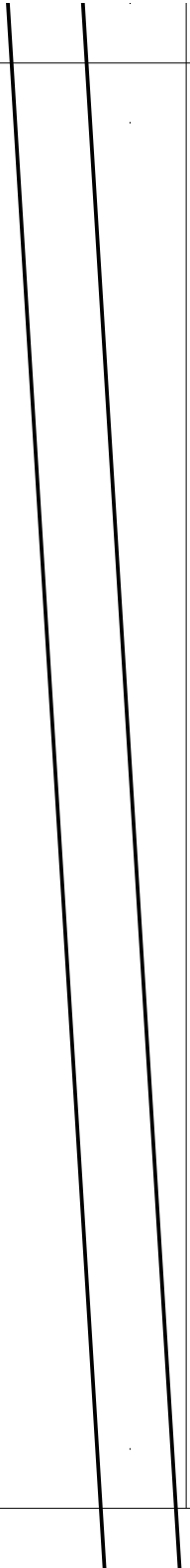


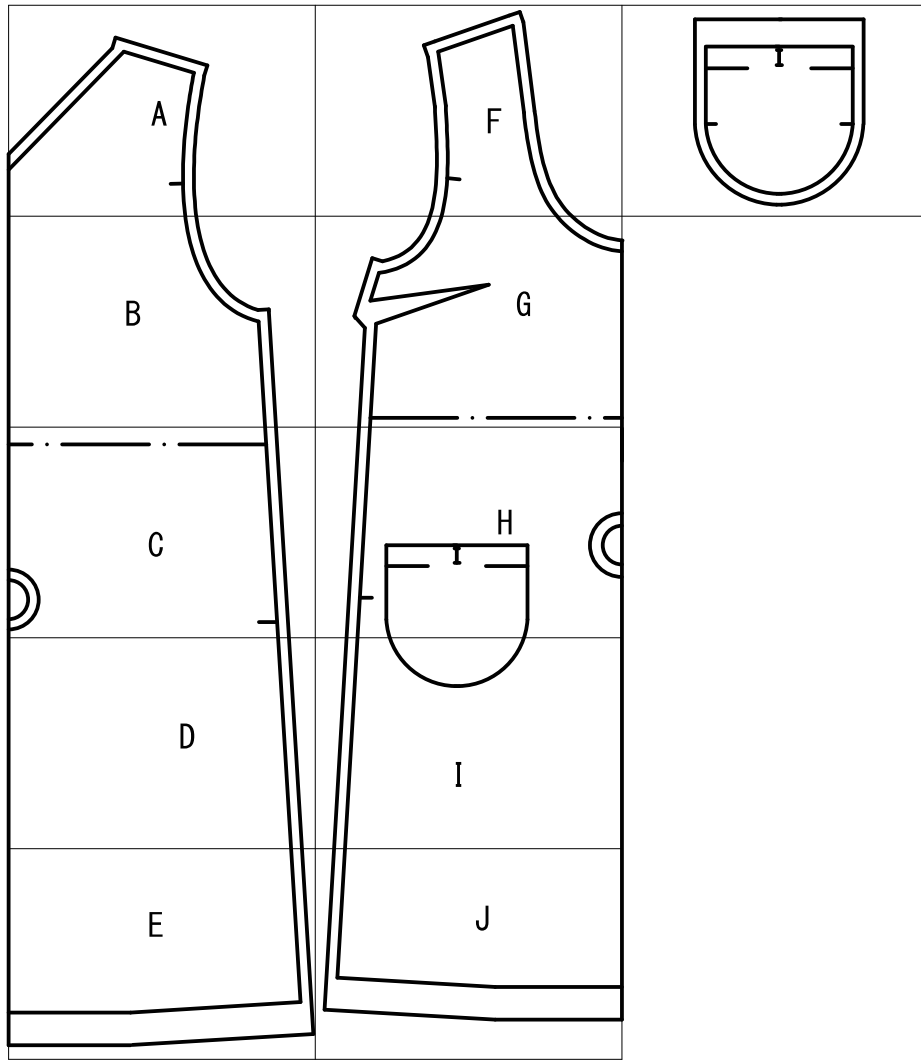
C





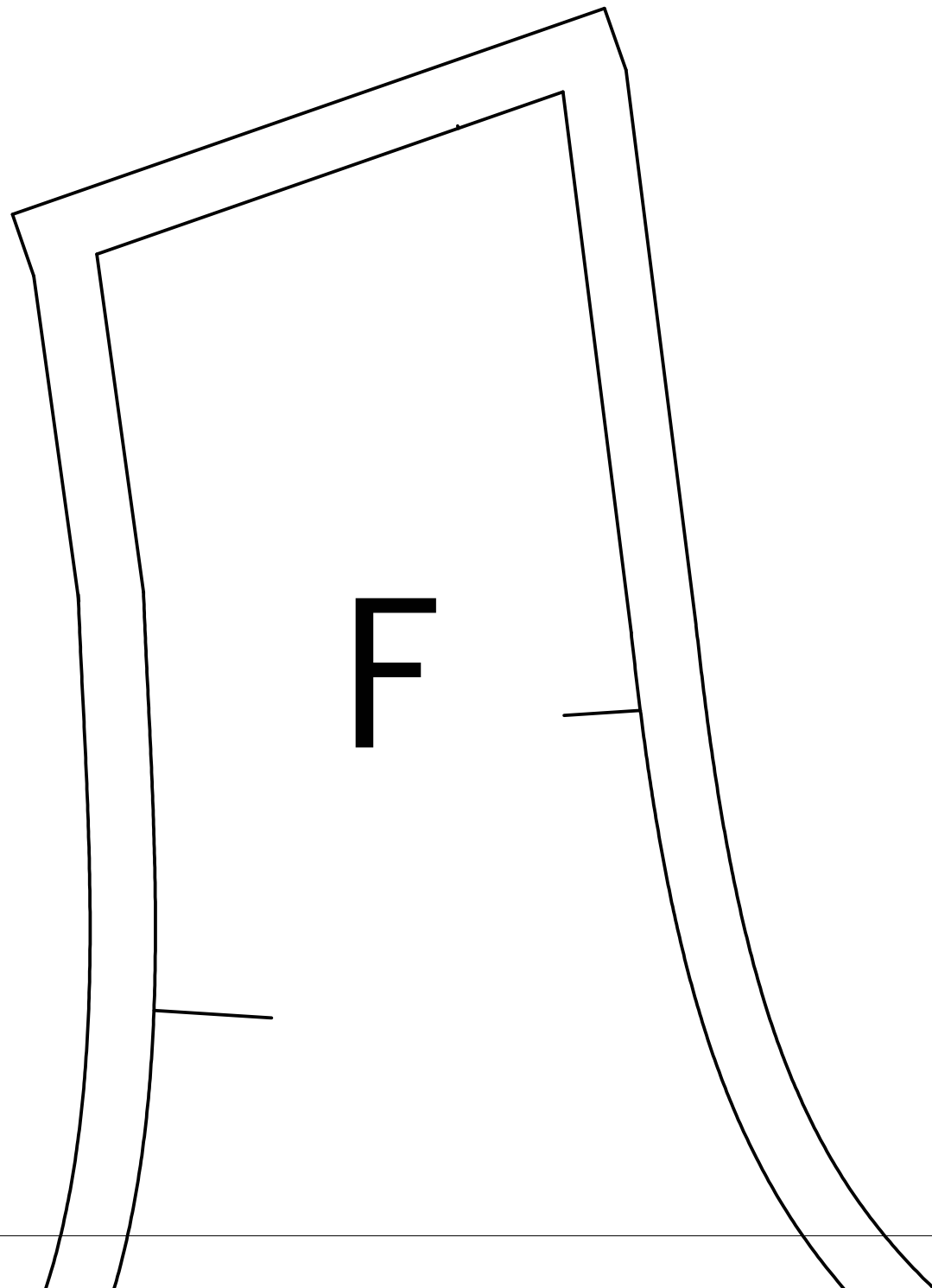
D





E

パターン貼り合せ図





G

前身頃

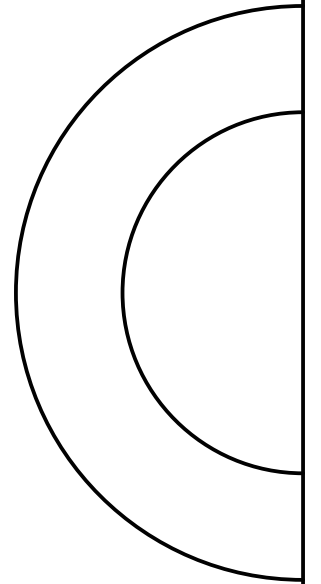
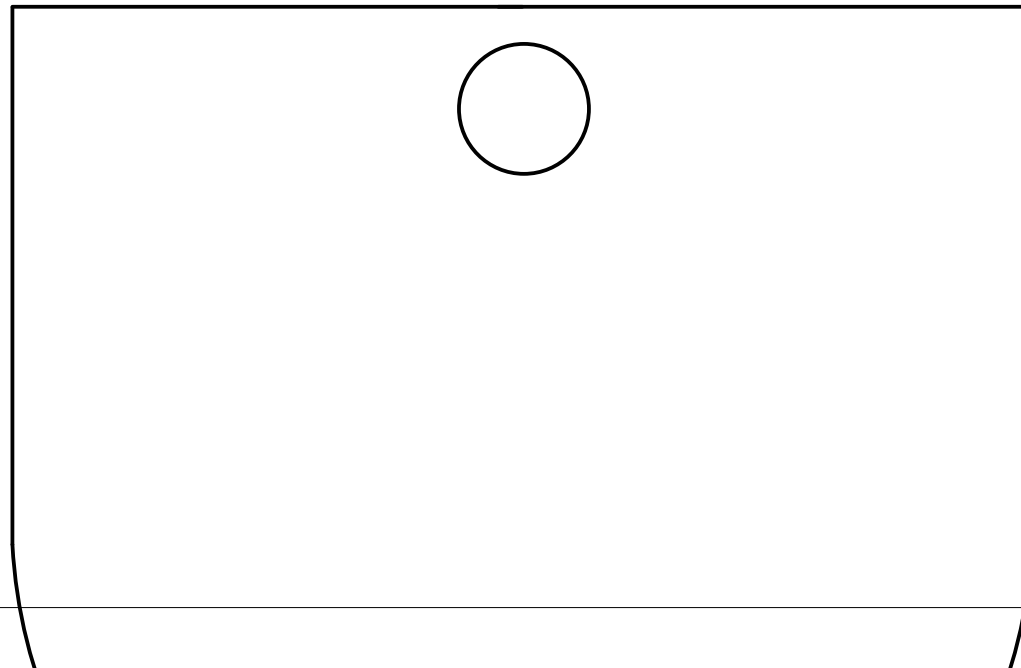
ダーツ
表身頃は下に倒す・見返しは上に倒す

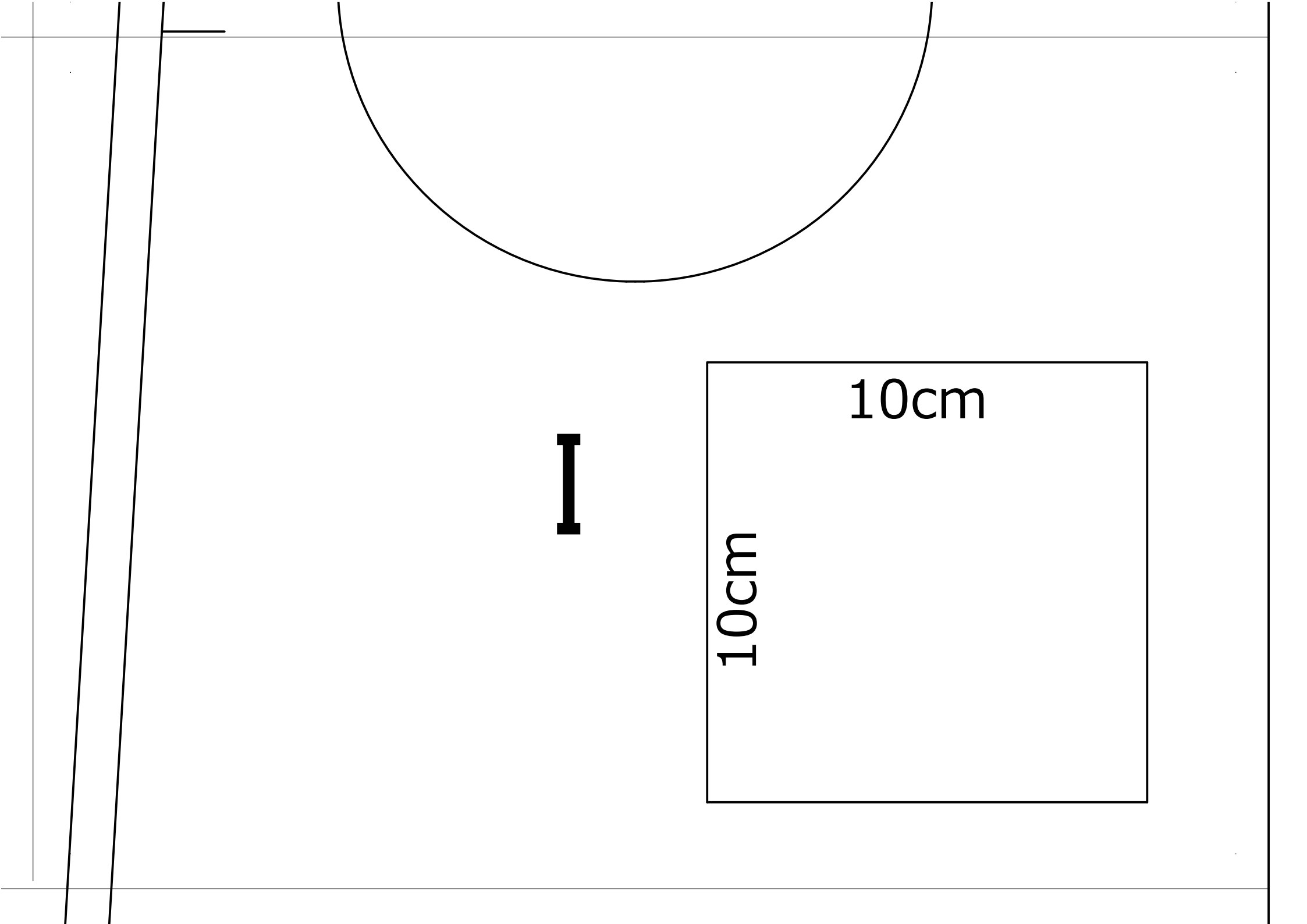
見返し線

身頃縫い代
表身頃は後ろに倒す
見返しは前に倒す

UネックジャンパーSK 11号

H





10cm

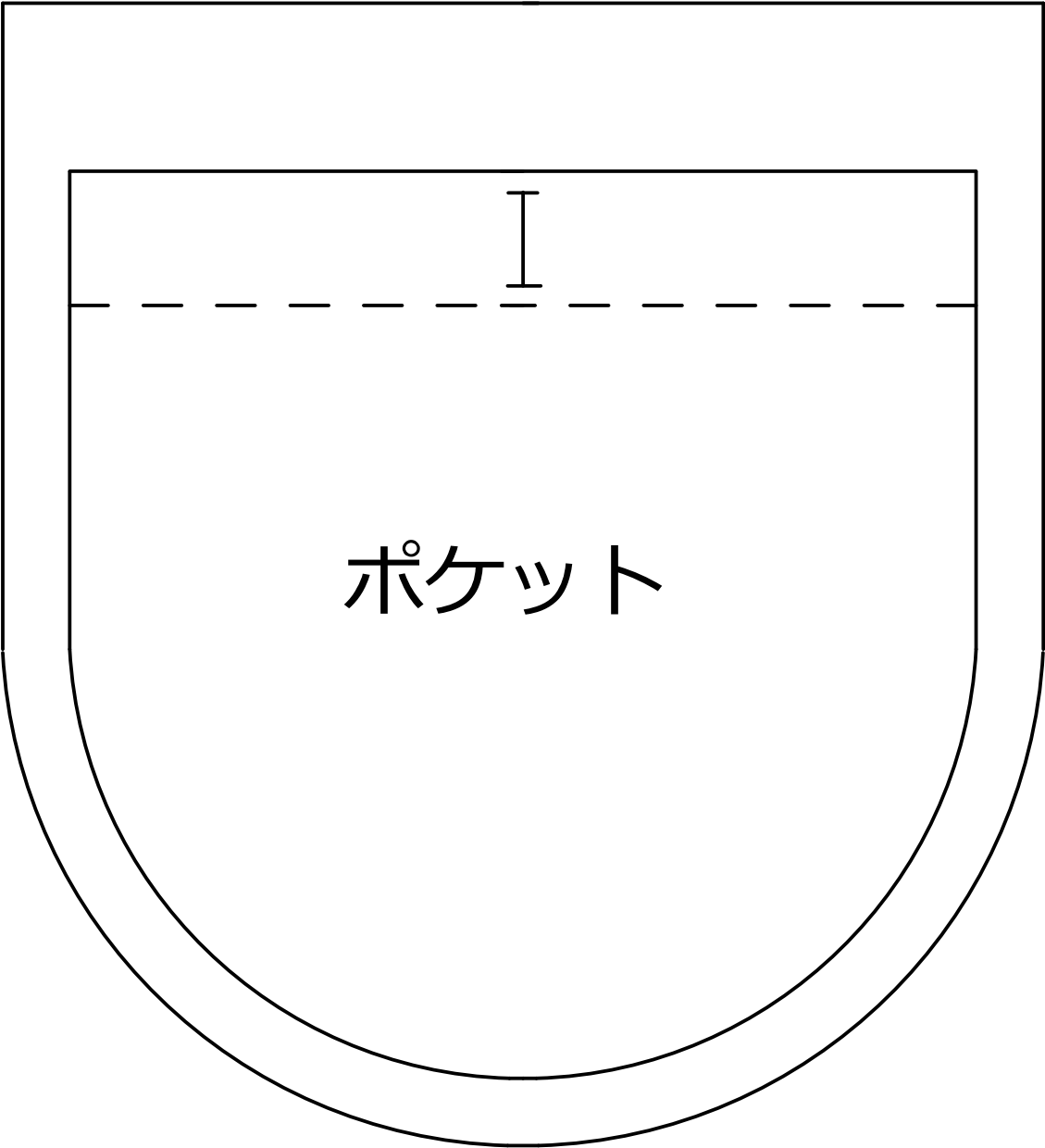
10cm



A technical drawing of a trapezoidal shape, possibly representing a skirt pattern piece. The shape is defined by a top horizontal line, a bottom horizontal line, and two slanted side lines. A large, bold, black letter 'J' is centered within the trapezoid. The drawing is enclosed in a rectangular frame.

J

裾 縫い代 30 mm



ポケット